

Flat 4, Sydney House, 16 Canonbury, Shrewsbury, SY3 7AH
£1,000 Per Month



Flat 4, Sydney House, 16 Canonbury, Shrewsbury, SY3 7AH

£1,000 Per Month

VIRTUAL TOUR AVAILABLE: Superb two bedroom second floor apartment in the exclusive residential area of Kingsland with elevated views over Shrewsbury town centre and the River Severn. On street parking available and a 5 minute walk into the town centre.

Available: Immediately

Description

Comprising: Communal entrance with stairs to second floor, large hallway, utility/WC, new kitchen/diner including stone worktops and appliances, large living room with superb views of Shrewsbury town centre and the River Severn, large master bedroom including fitted wardrobes, further single bedroom/study, modern bathroom with walk in shower. Gas central heating, air conditioning, double glazing. On street parking. EPC D



Unfurnished

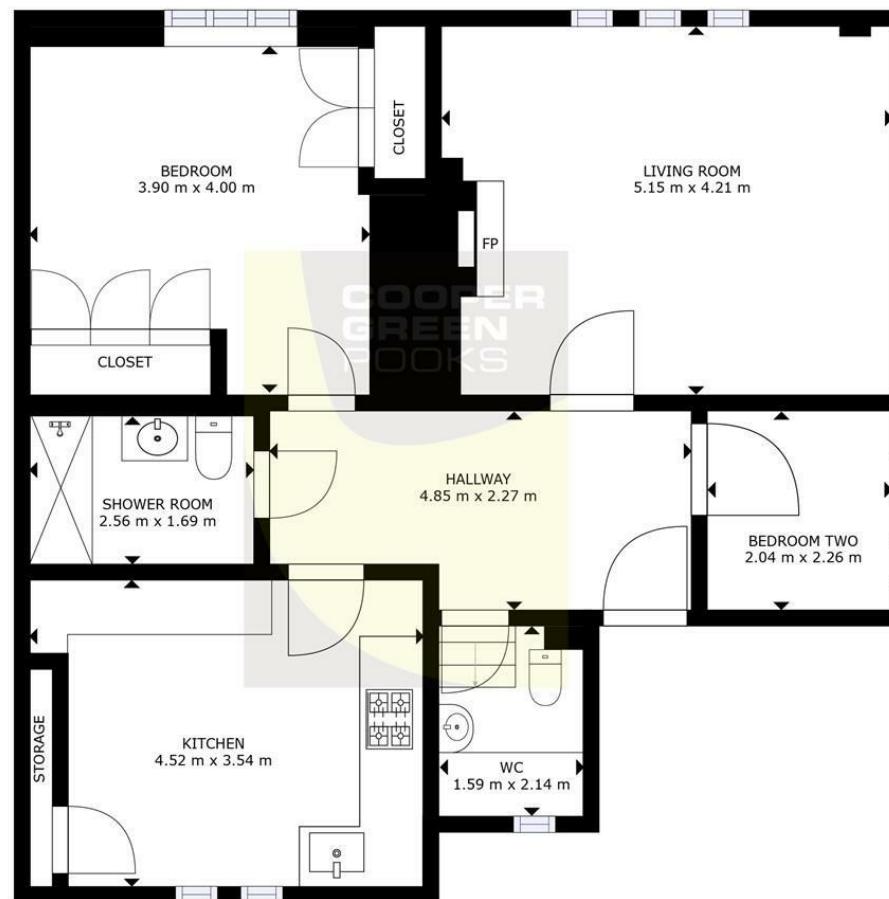
Council Tax Band: C

Available: 11th October 2024

EPC: D



Floor Plans



FLOOR PLAN

GROSS INTERNAL AREA
FLOOR PLAN: 85 m²
SIZES AND DIMENSIONS ARE APPROXIMATE, ACTUAL MAY VARY.

These particulars, whilst believed to be accurate are set out as a general outline only for guidance and do not constitute any part of an offer or contract. Intending purchasers should not rely on them as statements of representation of fact, but must satisfy themselves by inspection or otherwise as to their accuracy. No person in this firm's employment has the authority to make or give any representation or warranty in respect of the property.